



洲旭电路
GLOBAL SUCCESS
GROUP

Global Success Circuits Co.,Ltd

WHO ARE WE

Catalog

CONTENTS

1

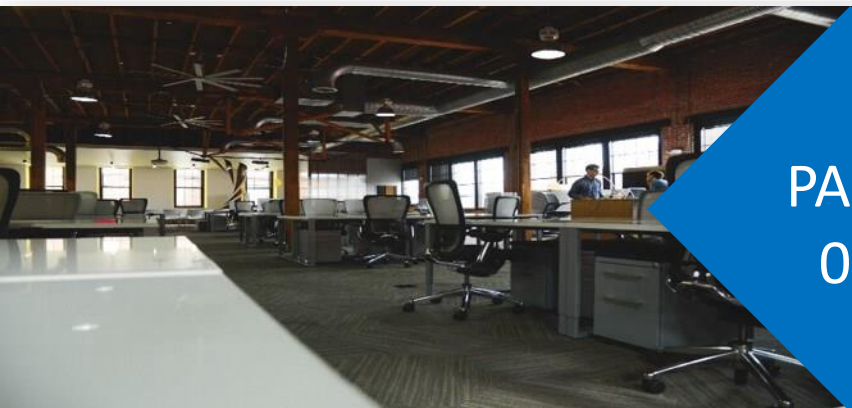
About Our
Company

2

About Our
Products

3

About Our
Market



PART
01

About Our Company

Company
Brief Introduction

History

Development
Trend

Organization
Chart

Culture

Honor

Company Brief Introduction



Global Success Circuits Co.,Ltd (GSC) was established in **Shenzhen, China in 2005**. It's a professional PCB manufacturer which produce 1L, 2L, Multi-layer PCB(2-20 layers), High-precision PCB, AL based PCB, etc.

GSC is **headquartered** in **Shenzhen, China**, with three plants in **Jiangsu, Jiangxi and Shenzhen**. It has more than 600 employees and currently has a maximum production capacity of **70,000 m² per month**.

The current **Registered Capital** of GSC is **RMB 50 million**.

History

Establishment of overseas sales department
and acquire ISO9001:2000 certificate.

2007

Investment of ¥ 50 mil to found JX
GS

2011

Group total sales reached ¥ 250,000,000
and eastern China sales department
was found in Suzhou and Xiamen

2014

Jiangsu GS was founded in
Huai' an City. Total investment:
¥ 100 , 000 , 000.

2015

2019

Group Max capacity :
70,000m²

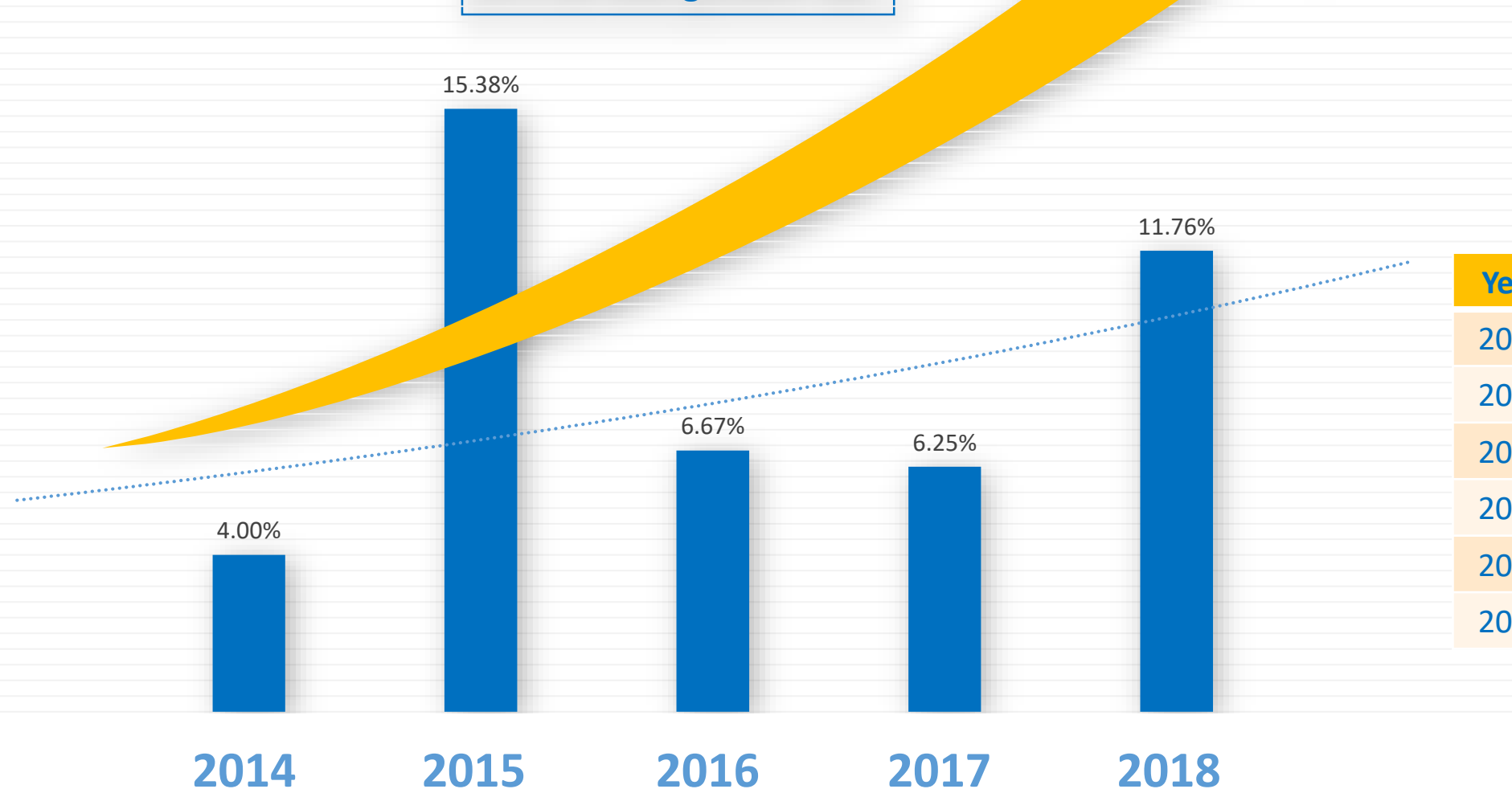
2005

SZ GS was founded

Development Trend

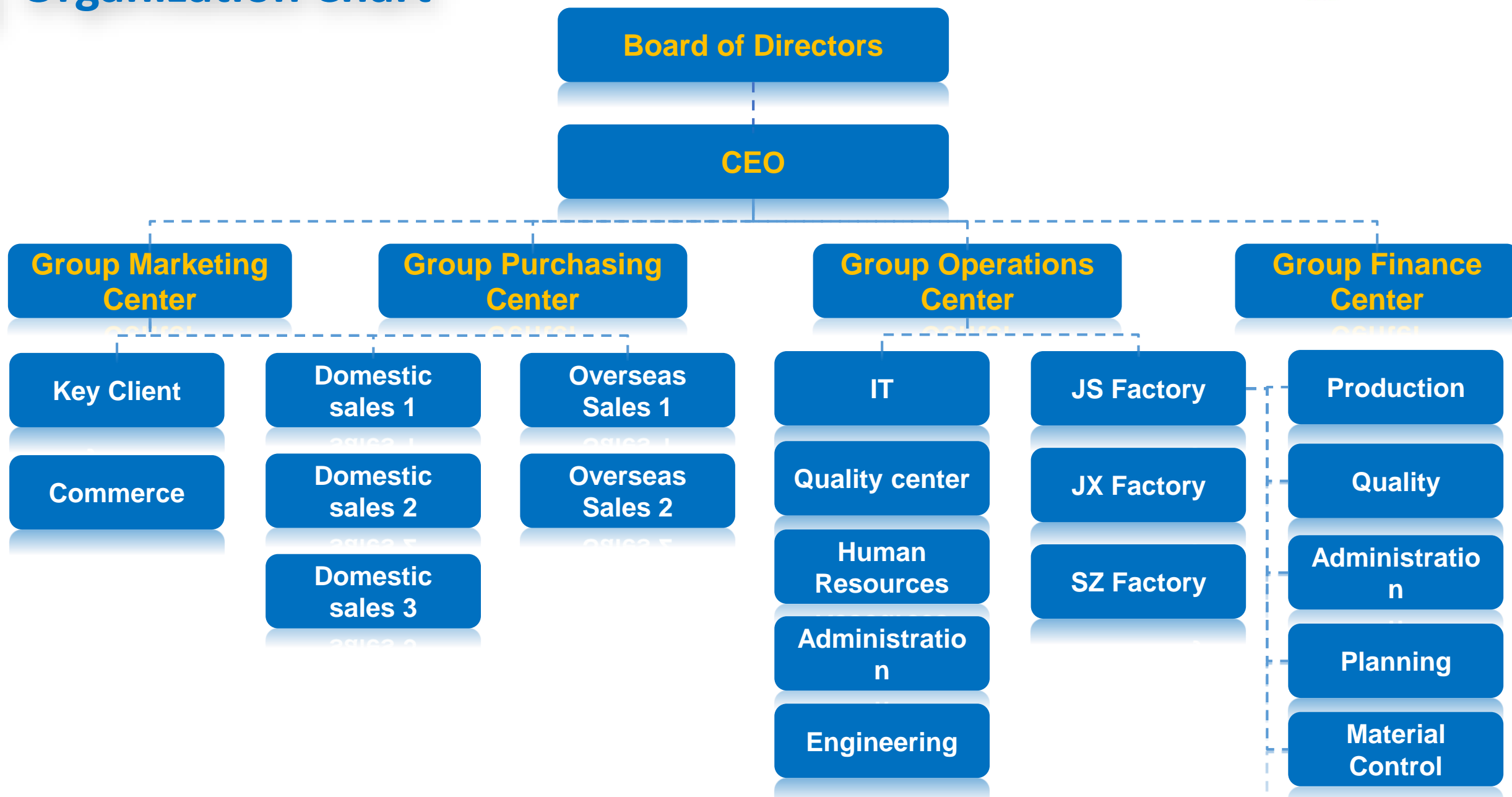
2019
estimated
67.2 Million \$!

Annual sales growth rate

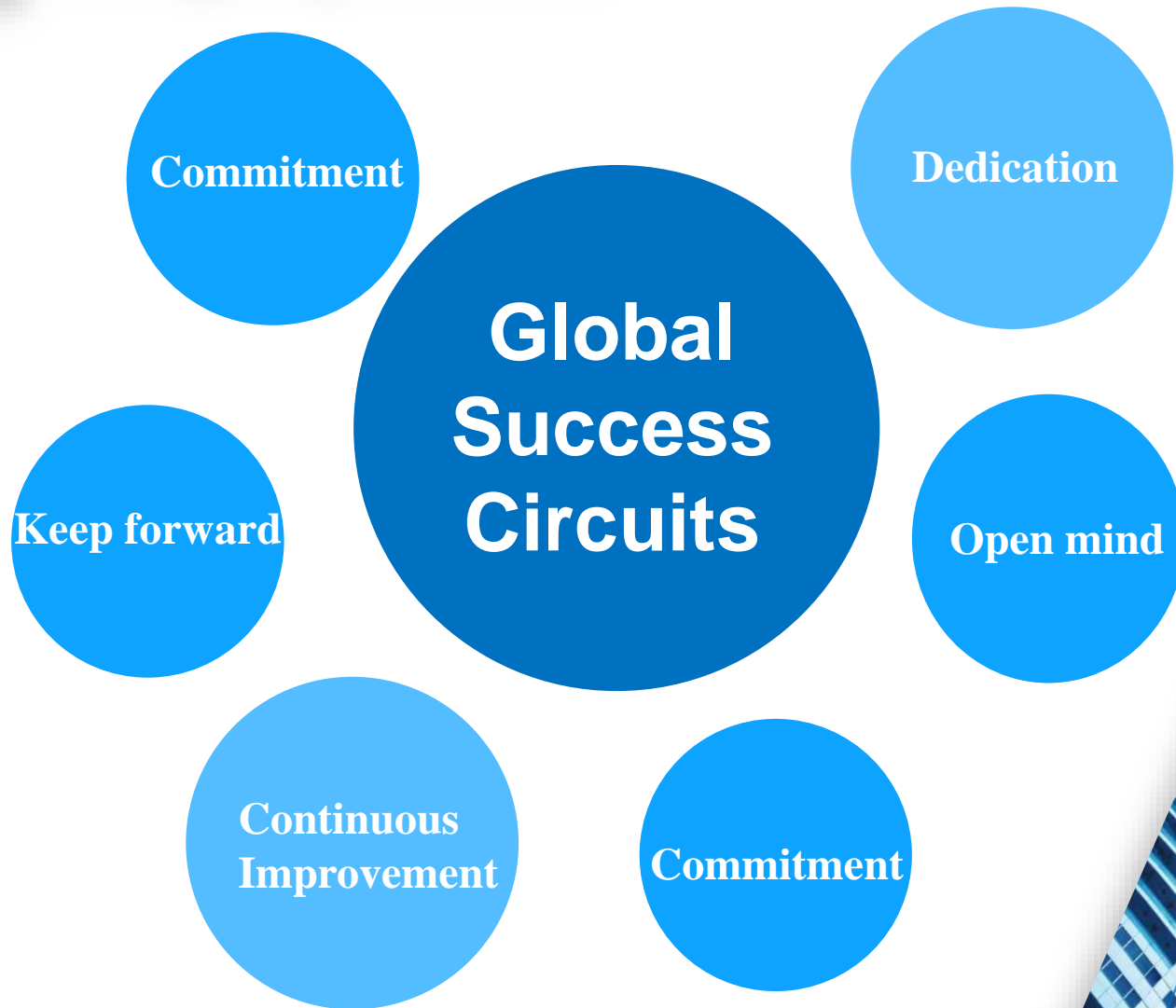


Year	Annual sales (million \$)
2013	38.5
2014	40.0
2015	46.2
2016	49.2
2017	52.3
2018	58.5

Organization Chart



Company Culture



Company Honor



National high-tech
enterprise



Shenzhen Industrial
Association
Member Unit



Safety Production
Standardized Management
Qualified Enterprise



Shenzhen
Famous brand



About Our Products

Main
Products

Manufacturing
Capabilities

Equipments

Manufacture
Flow

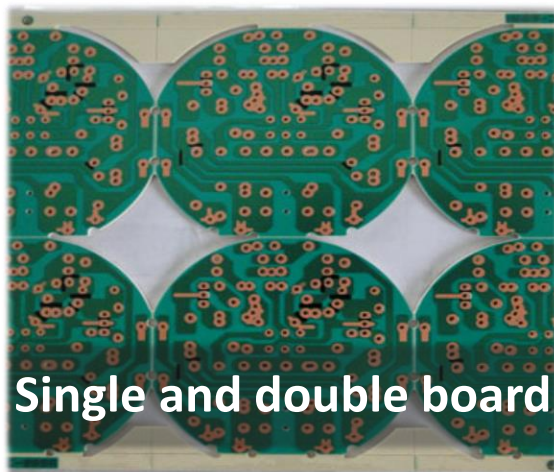
Factories

Key
Advantages

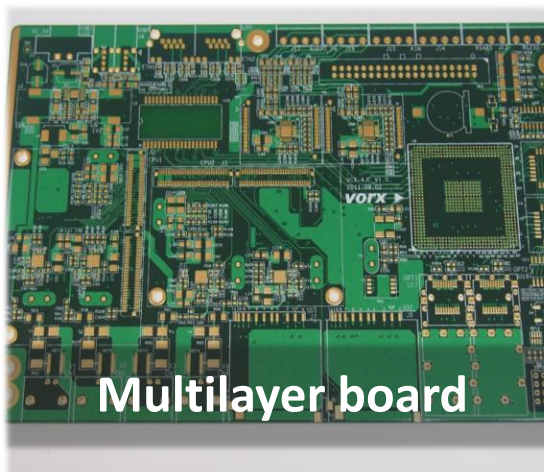
PART
02



Main Products



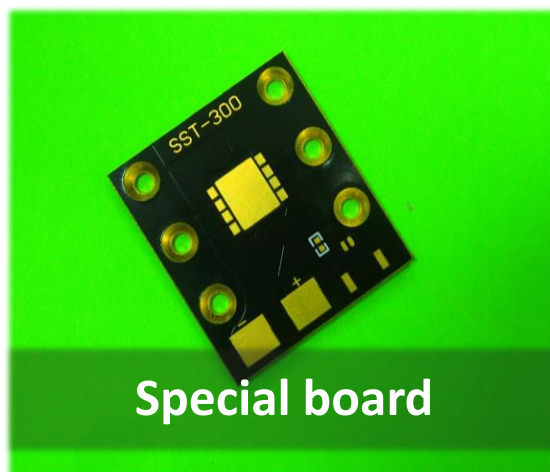
Single and double board



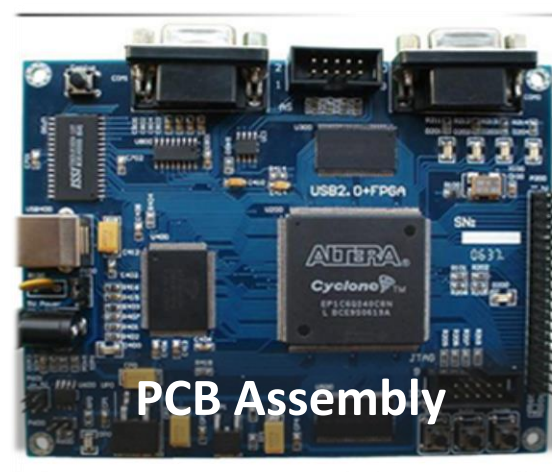
Multilayer board



Aluminum board



Special board

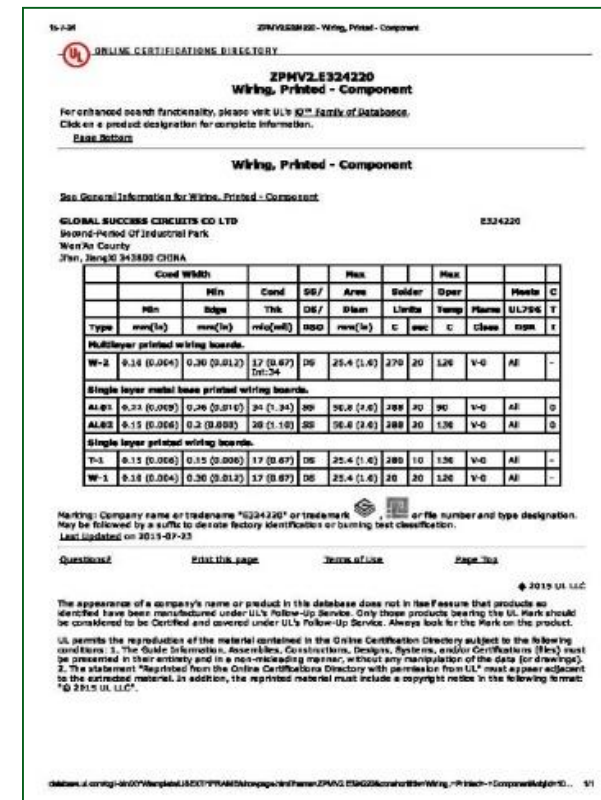


PCB Assembly

Manufacturing Capabilities

Factor	Parameter		
Layer	1-12L	Min PCB thk (double sided)	0.4mm
Max PNL size	635×1120mm	Min PCB thk (multi layer)	0.5mm
Max Cu thk	4OZ	Min inner layer thk	0.2mm
Min circuit width/space	0.1mm	Min hole positioning tolerance	±0.05mm
Min hole diameter	0.25mm (aspect ratio 8:1)	Min hole size tolerance	PTH: ±0.05mm NPTH: ±0.03mm
Warping	≤ 0.75%	Min profiling tolerance	±0.10mm
Impedance tolerance	+/-10%	Pattern registration tolerance	±0.075mm
Surface treatments	HASL, OSP, ENIG, Immersion Ag, Golden finger		
Base material	FR-4, high TG FR-4, Cu base FR-4, Al base board		
Sampling period	2L: 4-5 days; 4L: 5-7days		

IATF16949



CQC

ISO9001

UL

Equipments



Drilling



VCP



Inner layer



Lamination



OSP



Solder mask pretreatment

Equipments



AOI



E-Test



Auto E-Test



AOI of inner layer



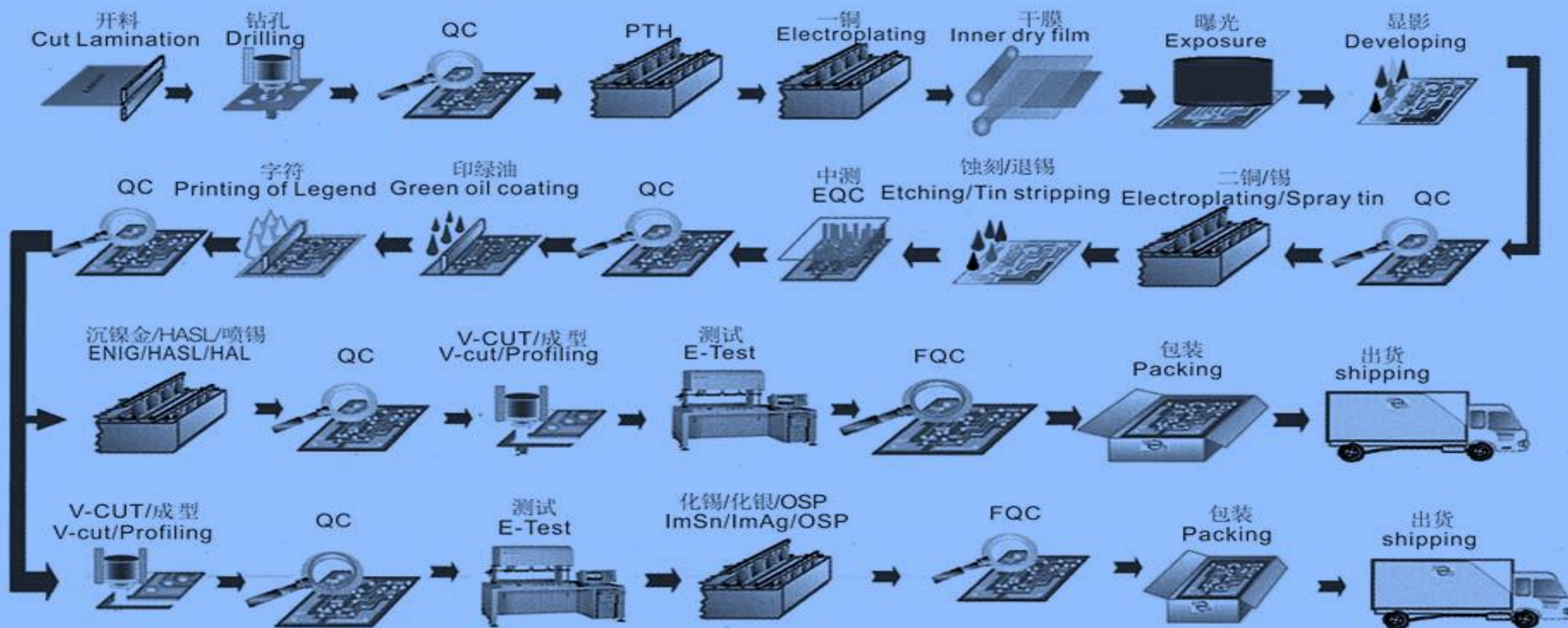
Lab



Visual inspection

Manufacture Flow

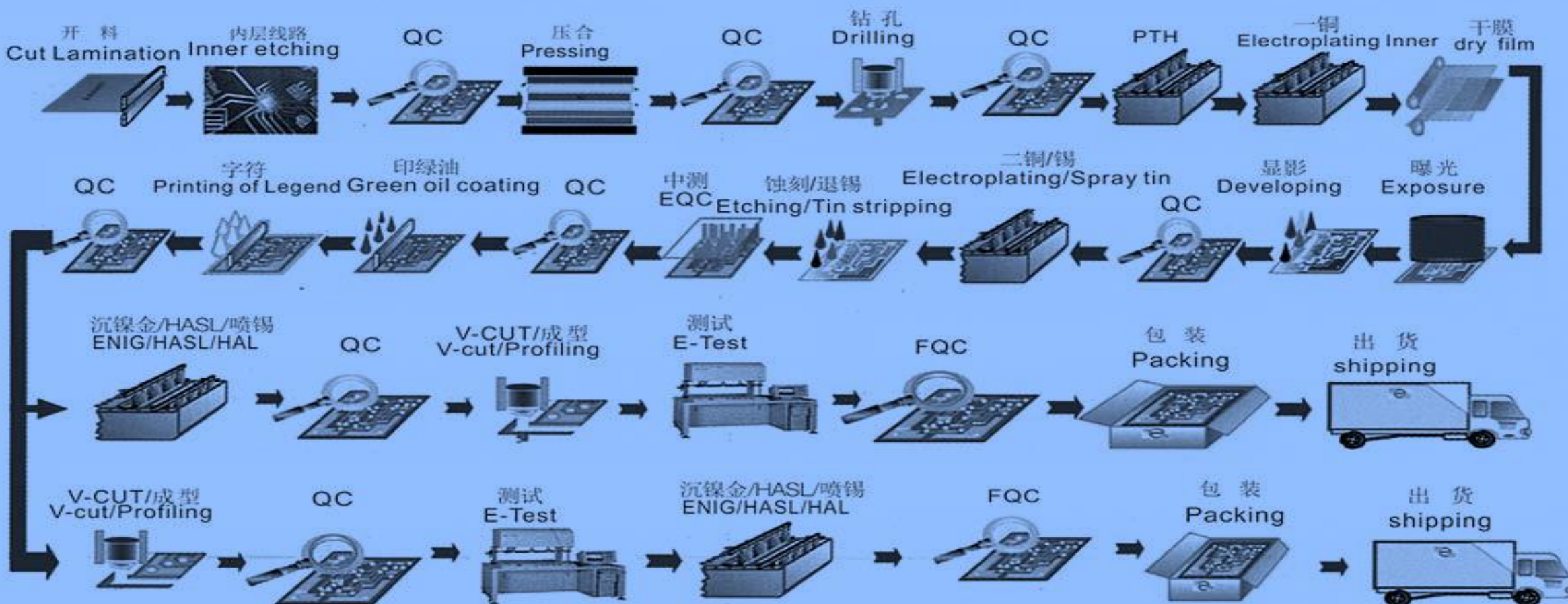
双面板流程图
Double-Sided Boards flowchart



Manufacture Flow

多层板流程图

Multi-Layer Boards flowchart



Factories

Headquater



Jiangsu Factory



Jiangxi Factory



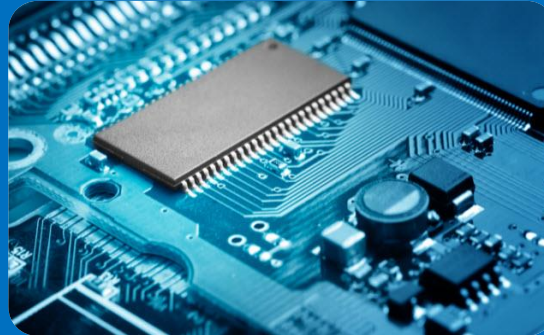
Shenzhen Factory



Key Advantages



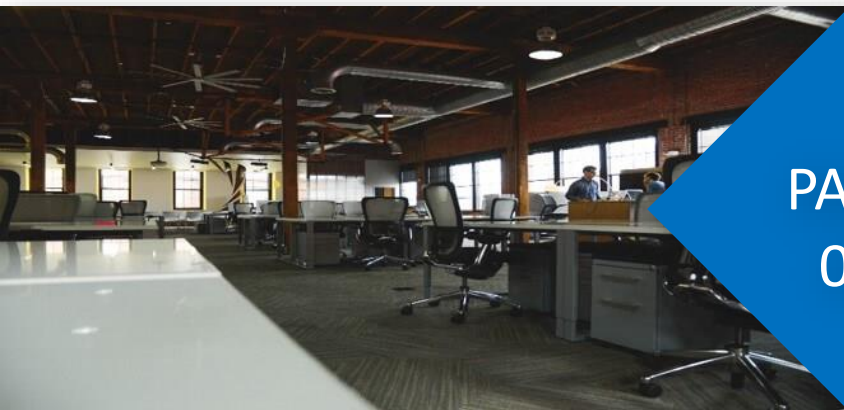
**Very stable
supply chain**



**Very suitable
products**



**Very willingly
to cooperate**



PART
03

About Our Market

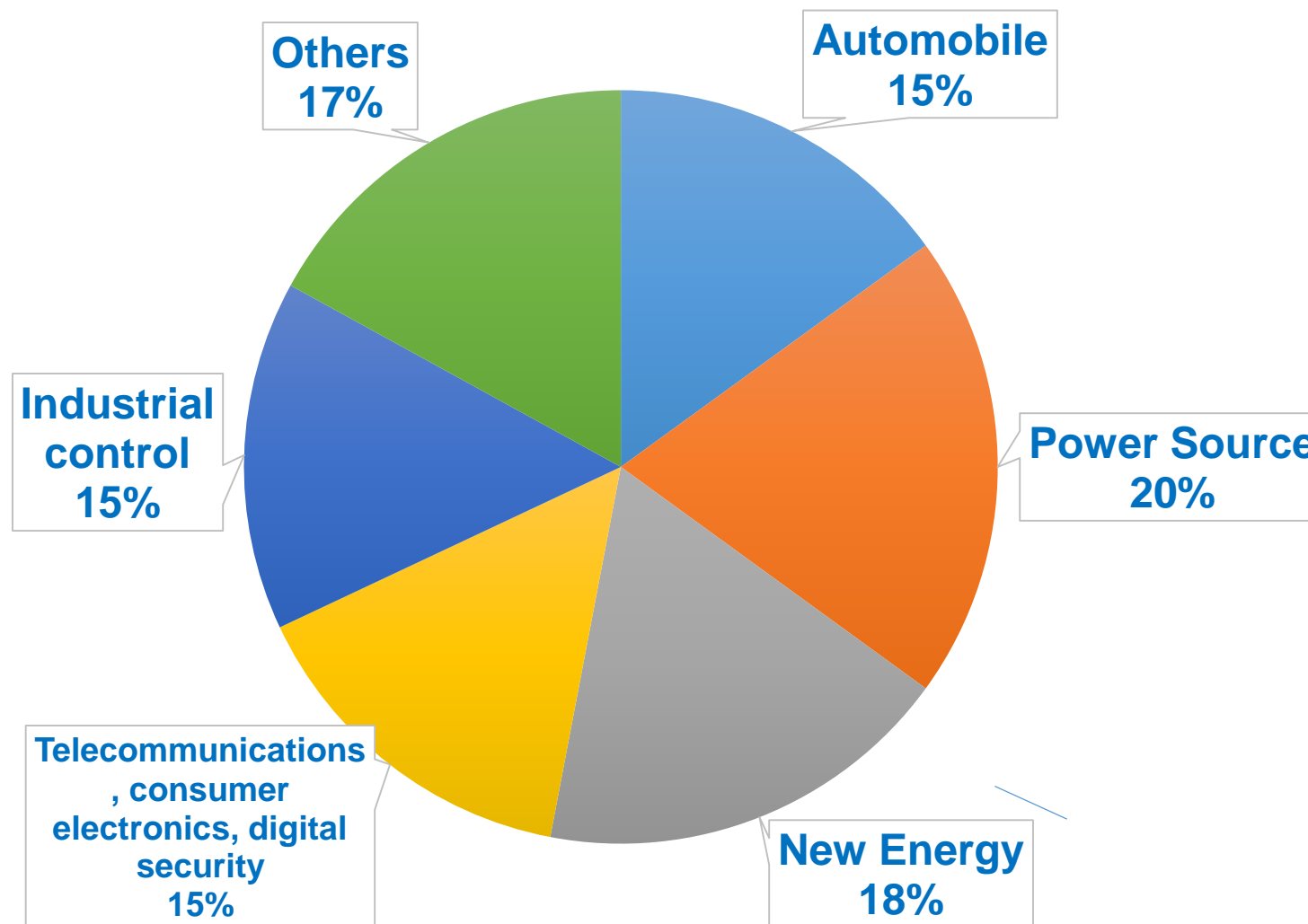
Global Sales
industry distribution

Group Domestic
Market

Group Overseas
Market

Cooperative
partners

Group Sales industry distribution

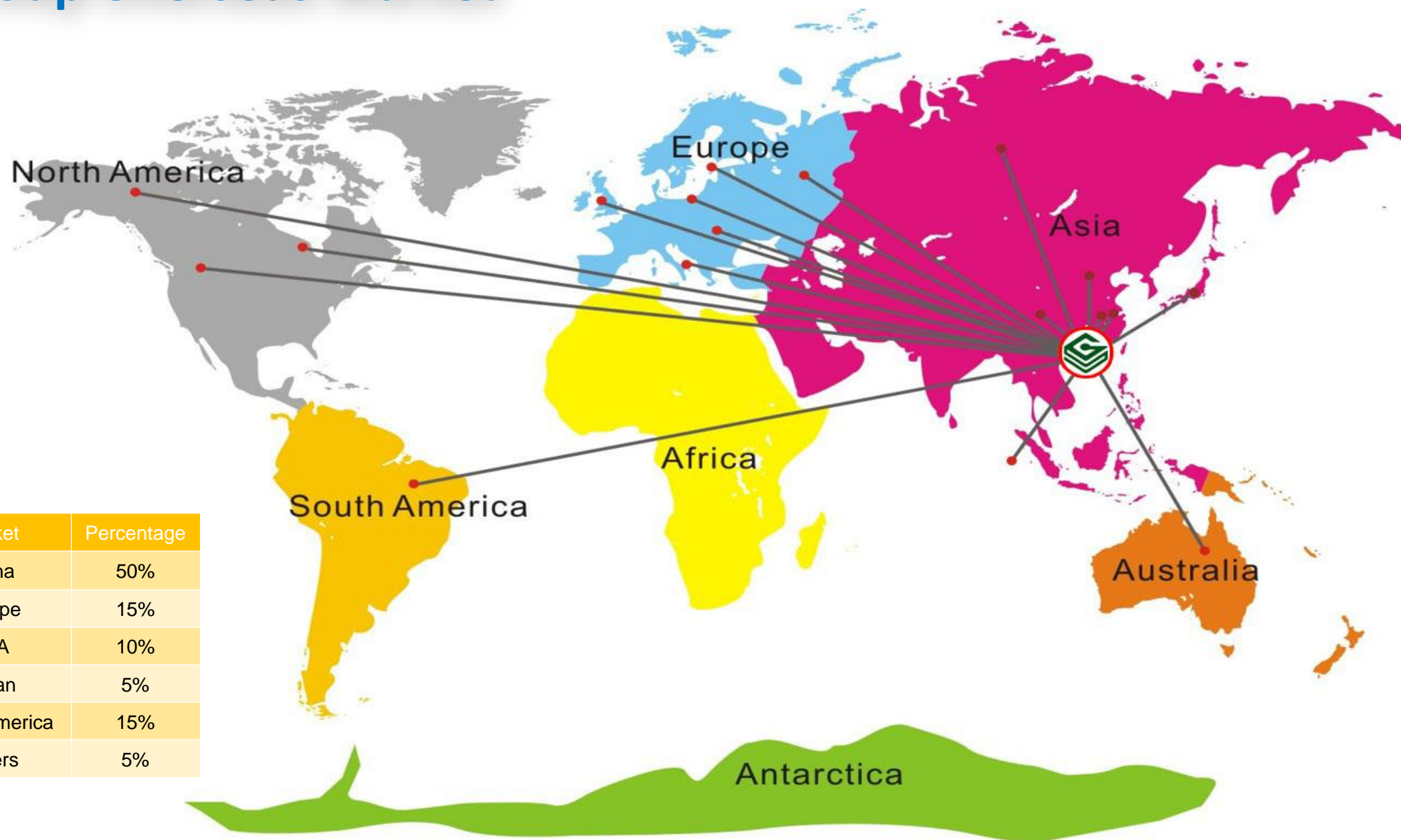


Industry	Percentage
Power Source	20%
New Energy	18%
Others	17%
Automobile	15%
Telecommunications, consumer electronics, digital security	15%
Industrial control	15%

Group Domestic Market



Group Overseas Market



Market	Percentage
China	50%
Europe	15%
USA	10%
Japan	5%
South America	15%
Others	5%

Cooperative partners

PHILIPS

Schneider
Electric

TCL

flex
LIVE SMARTER

CHERVON

VEICHI

IMI

UBTECH
Dream With Robot

Bestec

HARMAN

PISEN®品胜

HanSong

KSTAR 科士达

EAST® 易事特

瑞德智能
REAL-DESIGN INTELLIGENCE

ROAD ROVER
路畅科技

HOLLEY | 华立

海兴电力科技
Hexina Electrical Co., Ltd.

SOLING 索菱

SCUD 飞毛腿

THANK YOU



洲旭电路
GLOBAL SUCCESS
GROUP

Contact Me

Ace Chow

Email: sales10@gscpcb.cn

Tel: +86 (0)755 8177 3970

Whatsapp :+86-13827460477

Skype: live:zhouhaotz